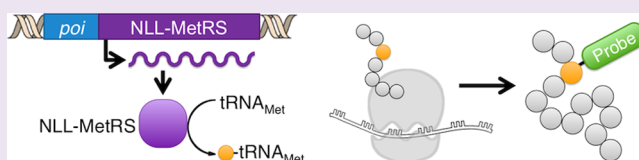


State-Selective Metabolic Labeling of Cellular Proteins

John T. Ngo,[†] Brett M. Babin,[†] Julie A. Champion,[‡] Erin M. Schuman,[§] and David A. Tirrell^{*,†}[†]Division of Chemistry and Chemical Engineering, California Institute of Technology, 1200 E. California Blvd., Pasadena, California 91125, United States[‡]School of Chemical and Biomolecular Engineering, Georgia Institute of Technology, 311 Ferst Drive, N.W., Atlanta, Georgia 30332, United States[§]Max Planck Institute for Brain Research, Max von Laue Strasse 3, Frankfurt, Germany 60438

Supporting Information

ABSTRACT: Transcriptional activity from a specified promoter can provide a useful marker for the physiological state of a cell. Here we introduce a method for selective tagging of proteins made in cells in which specified promoters are active. Tagged proteins can be modified with affinity reagents for enrichment or with fluorescent dyes for visualization. The method allows state-selective analysis of the proteome, whereby proteins synthesized in predetermined physiological states can be identified. The approach is demonstrated by proteome-wide labeling of bacterial proteins upon activation of the P_{BAD} promoter and the SoxRS regulon and provides a basis for analysis of more complex systems including spatially heterogeneous microbial cultures and biofilms.



Cell function and survival rely on the proper regulation of gene expression to ensure that proteins are synthesized in response to internal and external demands. Proteins that execute basic cellular functions (“housekeeping proteins”) are constitutively expressed, while expression of other genes may be restricted to specific physiological states. For instance, in bacterial pathogens, ribosomal proteins may be synthesized continually whereas expression of virulence factors may be limited to a particular stage of infection of a host. These differences are controlled in large part by transcriptional regulation and *cis*-regulatory elements, such as upstream promoters. The level of transcription from a promoter can reflect cellular demand for the associated protein and may signify a cell’s physiological state. For example, transcription from the *soxS* promoter in *Escherichia coli* drives expression of the SoxS protein, a transcription factor responsible for directing expression of dozens of genes involved in protection against damage by free radicals; correspondingly, activation of the *soxS* promoter is used as an indicator of cell oxidative stress.¹ In other cases, transcriptional activity of a particular promoter may be indicative of cell physiology while having no direct role in the regulation of other genes. For example, expression of SspH1 (a secreted virulence factor) by *Salmonella typhimurium* is limited to bacteria residing within mammalian cells,² although SspH1 has no known role in the regulation of other *Salmonella* genes, its expression is concurrent with that of other proteins that promote intracellular survival.

Phenotypic heterogeneity is characteristic of complex cellular systems ranging from microbial biofilms to multicellular organisms. Conventional proteomic analysis of such systems is of limited value, because it provides only an average protein composition that obscures differences among cells that are in various physiological states. Here we describe a method for

“state-selective” analysis of the proteome, in which we selectively tag only those proteins that are made in cells in which specific promoters are active.

We have described previously the bio-orthogonal non-canonical amino acid tagging (BONCAT) strategy for selective enrichment and identification of newly synthesized cellular proteins.³ In procedures similar to those used in isotopic labeling, non-canonical amino acids (ncAAs) bearing azide or alkyne side chains are introduced to cells in a “pulse” during which proteins undergoing active translation are tagged. Tagged proteins are distinguished from those made prior to the pulse through bio-orthogonal ligation of the nCAA side chain to probes that permit their detection, isolation,⁴ and visualization.^{5,6} In 2009, we reported a genetically targeted strategy for confining protein labeling to specific cells within heterogeneous mixtures,⁷ by using the methionine (Met, Figure 1A) surrogate azidonorleucine (Anl, Figure 1A) as the metabolic label. In this approach, we relied on expression of the L13N/Y260L/H301L mutant form of the *E. coli* methionyl-tRNA synthetase (designated NLL-MetRS) to enable cells to use Anl in competition with Met during translation.⁸ Cells that do not express the mutant synthetase are inert to Anl. In cellular mixtures, only those proteins made in cells that express the mutant synthetase are labeled. Through this approach, proteins synthesized in targeted cells can be selectively isolated from complex mixtures for identification by mass spectrometry or conjugated to fluorescent dyes for *in situ* visualization. Hang and co-workers have used NLL-MetRS to probe the *Salmonella*

Received: May 14, 2012

Accepted: June 7, 2012

Published: June 12, 2012

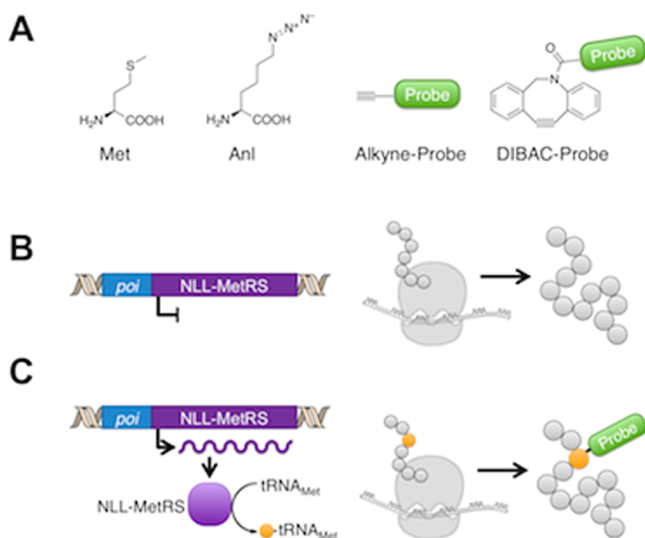


Figure 1. Promoter-directed proteomic labeling with Anl. (A) Structures of amino acids and simplified representations of probes used in this study. (B) NLL-MetRS expression is placed under control of a promoter of interest (poi). When transcriptional activity of the poi is “off,” the NLL-MetRS is not expressed and proteins are not tagged. (C) When transcription of the poi is “on,” the NLL-MetRS is expressed and newly synthesized proteins are tagged.

proteome in the course of infection of mammalian macrophages.⁹

Here we describe methods for “state-selective” labeling of cellular proteins. We placed the gene encoding NLL-MetRS under control of two promoters of interest and compared the patterns of protein synthesis observed in active and inactive transcriptional states. We anticipated that when the promoter is inactive (or repressed), NLL-MetRS would not be expressed and cellular proteins would not be subject to Anl labeling (Figure 1B). However, under inducing conditions where transcription from the promoter is active, NLL-MetRS is expressed and newly synthesized proteins can be tagged with Anl (Figure 1C).

To demonstrate this approach, we first used arabinose induction of the P_{BAD} promoter to drive expression of the mutant synthetase. The combined negative and positive control of transcription from the P_{BAD} promoter yields an “off/on” genetic switch that permits tightly controlled gene expression in *E. coli*.¹⁰ We inserted a DNA sequence encoding NLL-MetRS into a plasmid downstream of the P_{BAD} and *ara* operon regulatory elements. We transformed the resulting construct into *E. coli* cells and compared protein labeling under non-inducing and inducing conditions (Figure 2A). Following a 10-min pulse with Anl, cell lysates were subjected to Cu (I)-catalyzed ligation¹¹ to an alkyne probe (Alkyne-TAMRA, Figure 1A) for selective modification of Anl-tagged proteins. After separation of proteins by SDS-PAGE, in-gel fluorescence scanning revealed proteome-wide incorporation of Anl in arabinose-induced cells. Proteins from cells grown under non-inducing conditions did not exhibit significant labeling. NLL-MetRS expression, as determined by Western blot analysis, was consistent with both P_{BAD} transcriptional behavior and fluorescence detection of Anl-tagged proteins (Figure 2B).

Next we examined a system in which protein tagging was dependent on activation of the oxidative stress response in *E. coli*. We placed NLL-MetRS expression under control of SoxR, an oxidative stress sensor and transcription factor that is

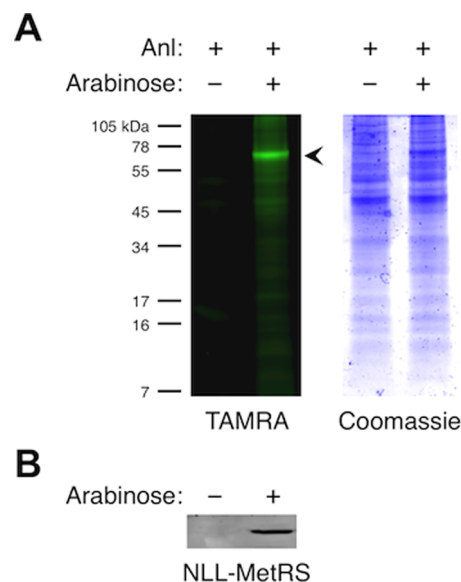


Figure 2. Proteomic labeling with Anl in response to arabinose. (A) When under control of the P_{BAD} promoter and *ara* operon regulatory elements, NLL-MetRS can be induced by arabinose. Induced (+ arabinose to 0.2% (w/v)) and uninduced (– arabinose) cells were pulsed with 100 μ M Anl. Incorporation of Anl was assessed by conjugation to alkyne-TAMRA and subsequent detection by in-gel fluorescence scanning (left). Arrowhead indicates labeling of the induced NLL-MetRS. Coomassie staining was used to confirm even loading of protein between lanes (right). (B) Western analysis of NLL-MetRS expression in uninduced (–) and induced (+) cells.

constitutively expressed in inactive form.^{1,12} SoxR contains two iron–sulfur clusters that are subject to one-electron oxidation or nitrosylation by superoxide and nitric oxide, respectively.^{12–14} SoxR binds the promoter that controls expression of the *soxS* gene; transcription from this promoter is low when SoxR is in its reduced, inactive state. Upon activation of SoxR by superoxide or nitric oxide, strong expression of SoxS is driven from the *soxS* promoter. The SoxS protein, also a transcription factor, is responsible for activating the cellular response to superoxide and nitric oxide and coordinates expression of more than 40 genes involved in detoxification and oxidative-damage repair.

To synchronize labeling with the oxidative stress response, we placed the NLL-MetRS gene under control of the SoxRS regulon by positioning it directly downstream of the *soxS* promoter (see Supporting Information). The resulting construct was introduced to *E. coli* cells via a low-copy number plasmid such that, in addition to control of chromosomally encoded SoxS, the SoxRS regulon was also responsible for directing expression of NLL-MetRS (Figure 3A). As described earlier for the P_{BAD} system, we examined promoter-directed protein tagging under both non-inducing and inducing conditions. Because the *E. coli* response to oxidative stress is rapid (with superoxide-induced transcripts reaching maximal values within minutes¹⁵), we examined protein tagging during a short interval immediately following exposure to superoxide. We activated the SoxRS regulon in *E. coli* cells grown in liquid culture by adding the superoxide-generating agent paraquat (PQ).¹³ After a 15-min pulse with Anl, tagged proteins were modified in lysates by strain-promoted conjugation to a dibenzoazacyclooctyne¹⁶ (DIBAC)-functionalized fluorescent dye (DIBAC-TAMRA, Figure 1A) and separated by SDS-

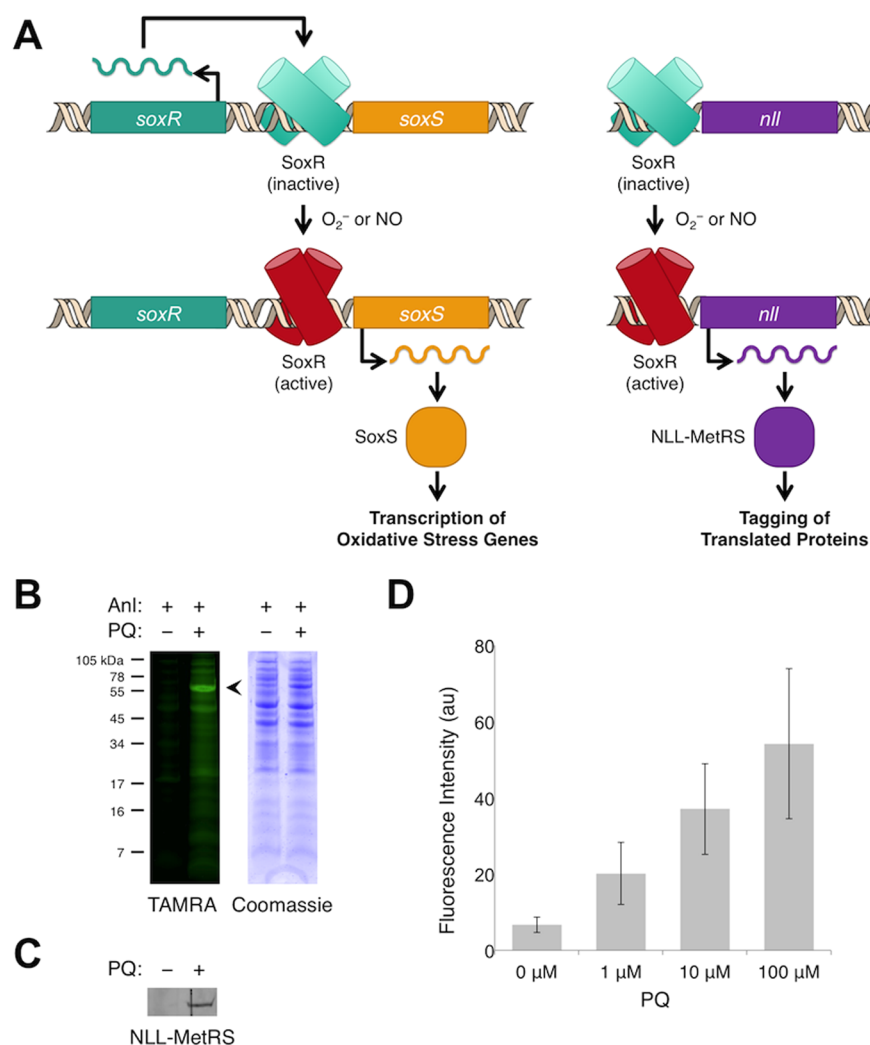


Figure 3. Proteomic labeling with Anl under conditions of oxidative stress. (A) The NLL-MetRS is under control of the SoxRS regulon and is activated by superoxide or nitric oxide. (B) Anl tagging is activated in cells treated with paraquat (PQ), a superoxide-generating agent. Cells were treated with PQ or were uninduced and subsequently pulsed with 125 μ M Anl. Incorporation of Anl was assessed by conjugation to DIBAC-TAMRA and subsequent detection by in-gel fluorescence scanning (left). Arrowhead indicates labeling of the induced NLL-MetRS. Coomassie staining was used to confirm even loading of protein between lanes (right). (C) Western analysis of NLL-MetRS expression in induced (+PQ) and uninduced (-PQ) cells. (D) The degree of tagging is sensitive to the level of oxidative stress induction by PQ. Cells were treated with various concentrations of PQ and pulsed with a fixed concentration of Anl (125 μ M). The extent of tagging was assessed by conjugation to alkyne-TAMRA and measurement of individual cell intensities by fluorescence microscopy. Error bars represent the standard deviation of each population examined.

PAGE. In-gel fluorescence scanning yielded results analogous to those observed with the P_{BAD} system; activation of the *soxS* promoter with PQ (Figure 3B) induced proteome-wide tagging of proteins synthesized by *E. coli* in the oxidatively stressed state. Labeling was also detected in proteins from cells treated with nitric oxide (Supplementary Figure 1). Proteins from cells cultured under non-inducing conditions exhibited minimal evidence of tagging. NLL-MetRS expression, as revealed by Western blot analysis (Figure 3C), was induced by addition of PQ, and the extent of protein labeling was dependent on the PQ dose (Figure 3D, Supplementary Figure 3).

We achieved useful levels of protein-tagging specificity in these experiments despite low levels of “leaky” expression in both the P_{BAD} and SoxRS systems. Reduction of background labeling required optimization of the relative amounts of Anl and Met in the culture medium; we screened conditions by adjusting the concentration of Anl until negligible tagging was observed in non-induced cultures. Background signal was also reduced by using glucose (for P_{BAD} catabolite repression) or

thiamine (an antioxidant that reduces basal levels of SoxR oxidation). Use of low-copy-number plasmids was essential for minimizing background labeling; we anticipate that a single copy of the NLL-MetRS gene by chromosomal recombination would also yield satisfactory results.¹⁷

We estimate that, under the conditions used in this study, the extent of replacement of Met by Anl is less than 10%. This estimate was made by comparing the intensities of TAMRA fluorescence from cells labeled with the SoxRS system to those from cells labeled under conditions previously shown to yield 10% substitution (Supplementary Figure 2). Similar results were obtained for the arabinose system (data not shown).

The work described here shows that controlled expression of NLL-MetRS can be used to restrict protein labeling to cells that are in predetermined physiological states. The linking of protein tagging to promoter activity permits “state-selective” analysis of the proteome such that proteins synthesized in specific cell states can be tagged and identified. Protein tagging is rapid, permitting analysis with temporal resolution in the

range of a few minutes. We are currently exploring the use of such methods to interrogate spatially heterogeneous biofilms and multicellular organisms.

METHODS

Materials. Anl was synthesized as previously described,¹⁸ but using *N* α -*boc*-lysine as the starting material instead of *N* α -*boc*-diaminobutyric acid. The [tris(3-hydroxypropyltriazolylmethyl)amine] (THPTA) ligand was synthesized as previously described.¹¹ Structures were verified by mass spectrometry and ¹H NMR spectroscopy.

TAMRA-alkyne and DIBAC-TAMRA were purchased from Click Chemistry Tools. Anti-PentaHis monoclonal antibody AlexaFluor647-conjugate was purchased from Qiagen. Coomassie Colloidal Blue staining kit was purchased from Invitrogen. BCA Protein Assay Kit was used to measure protein concentrations and was from Pierce. pREP4 encoding the bacterial *lacIq* gene was obtained from Qiagen (not to be confused with the commercially available mammalian pREP4). Biotin-PEG-alkyne was purchased from Invitrogen. pACYC was obtained from New England Biolabs free of cost. All other reagents were purchased from Sigma and used without further purification.

Cloning. All cloned constructs were confirmed by DNA sequencing by Laragen before use. Cloning of pJTN1 was previously described.⁷ To clone pBAD33-NLL-MetRS, the gene encoding an N-terminally His-tagged NLL-MetRS was amplified by PCR from pQE80-NLL⁸ using the following primers: 5'-atatggtacccatcatttagggctccacc-3' and 5'-atatgagctcggccacgaaggccaggagtgaacgatgagagatcgcac-3'. The resulting fragment was inserted between the *SacI* and *KpnI* sites of pBAD18 using standard cloning procedures.

To clone pREP4-*soxS*-NLL, the *soxS* promoter and ribosomal binding site sequence (as encoded on the DH10B *E. coli* genome) was added to the 5' end of the N-terminally His-tagged NLL-MetRS by PCR using primer overhangs. The fragment was inserted into the *NheI* site of pREP4. While this construct exhibited leaky expression, NLL-MetRS could still be activated using PQ and nitric oxide (this construct was used in preparing Supplementary Figure 1). Because of leaky expression, this construct was not used in subsequent experiments.

To clone pSOX-NLL-MetRS, the IDT_Sox_Regulon sequence (below) was custom synthesized by Integrated DNA Technologies and received from the manufacturer on pSOX_IDT. The gene encoding NLL-MetRS was amplified from pQE80-NLL by PCR using primers 5'-atatggtacccatcatttagggctccacc-3' and 5'-ggtggaagcctctaataagaagatct-3'. The resulting fragment was inserted between the *Bam*HI and *Bgl*II sites of pSOX_IDT to form pSOX_IDT_NLL. The cassette encoding the NLL-MetRS under control of the SoxRS regulon (see Supporting Information) was amplified from pSOX_IDT_NLL by PCR using the primers 5'-atatgctagccctgttaaacacgagccagc-3' and 5'-atatgctagcagattgagcctcaggaacagctatgac-3'. The resulting fragment was inserted at the *NheI* site of the low-copy number pACYC177 plasmid to form pSOX-NLL-MetRS. DH10B *E. coli* cells harboring the pSOX-NLL-MetRS plasmid were used to generate the data displayed in Figure 3, Supplementary Figure 2, and Supplementary Figure 3. A schematic of the construct is shown in Figure 3A.

Protein Tagging with Anl. P_{BAD} system: DH10B *E. coli* cells transformed with pBAD33-NLL-MetRS were grown in LB medium supplemented with 0.2% glucose and 100 mg L⁻¹ ampicillin overnight at 37 °C with orbital shaking at 250 rpm. The following day, the culture was diluted 1:50 into M9 minimal medium supplemented with 40 mg L⁻¹ of each of the 20 canonical amino acids, 1 mM MgSO₄, 0.1 mM CaCl₂, 30 mg L⁻¹ thiamine hydrochloride, and 0.4% (v/v) glycerol. This culture was grown at 37 °C with orbital shaking at 250 rpm until OD₆₀₀ was ~0.5, at which point the culture was divided into two. To one culture, arabinose was added to a final concentration of 0.2% for induction of the NLL-MetRS. Ten minutes later, both cultures were pulsed by addition of Anl to a final concentration of 100 μ M. After a 10 min pulse, cells were pelleted by centrifugation at 4 °C, rinsed once with cold PBS, and pelleted again. Cell pellets were frozen at -20 °C until further processing.

SoxRS system: DH10B *E. coli* cells transformed with pSOX-NLL-MetRS were grown overnight in SOB medium supplemented with 30 mg L⁻¹ thiamine hydrochloride and 100 mg L⁻¹ ampicillin at 37 °C with orbital shaking at 250 rpm. The following day, the culture was diluted 1:50 into fresh SOB medium supplemented with 10 mg L⁻¹ thiamine hydrochloride and 100 mg L⁻¹ ampicillin and grown at 37 °C with orbital shaking at 250 rpm. When the culture reached an OD₆₀₀ of ~1.0, the culture was diluted 1:10 into RPMI medium supplemented with 10% (v/v) fetal bovine serum and 10 mg L⁻¹ thiamine hydrochloride (RPMI was selected because it is a common medium for examining macrophage-induced oxidative stress in *E. coli*¹⁴). This culture was allowed to grow for 1 h. The culture was divided into two, and PQ was added to one culture at a final concentration of 100 μ M (from a freshly prepared 10 mM stock in water). Ten minutes later, both cultures were labeled by addition of Anl to a final concentration of 125 μ M. After a 15 min pulse, cells were pelleted by centrifugation at 4 °C, rinsed once with ice cold PBS, and pelleted again. Cell pellets were frozen at -20 °C until further processing.

For Supplementary Figure 1, DH10B cells were transformed with pREP4-*soxS*-NLL and maintained in 35 mg L⁻¹ kanamycin. PQ treatment was done as described for pSOX-NLL-MetRS, and exposure of cells to nitric oxide was done as described by Ding *et al.*¹³

Protein Conjugation and Detection. For protein conjugation to alkyne-TAMRA, cells were lysed by suspension in PBS containing 1% (w/v) SDS and heated to 75 °C. Lysates were briefly sonicated to shear DNA and reduce the viscosity of the solution. Protein concentrations were normalized by BCA assay. The conjugation reaction was performed according to the protocol suggested by Hong *et al.*¹⁰ using 10 μ M alkyne-TAMRA and a 20 min reaction time. Reactions were stopped by addition of Anl to a concentration of 100 μ M followed by brief vortexing.

For protein conjugation to DIBAC-TAMRA, cells were lysed by suspension in 100 mM Tris buffer (pH 8.0) containing 1% (w/v) SDS and heated to 75 °C. Lysates were briefly sonicated to shear DNA and reduce the viscosity of the solution. Prior to addition of DIBAC-TAMRA, cysteine thiols were blocked by addition of iodoacetamide to a final concentration of 25 mM. The blocking reaction was allowed to proceed for 1 h in the dark with mild agitation. Protein conjugation reactions were initiated by addition of DIBAC-TAMRA to a final concentration of 20 μ M (from a 5 mM stock in DMSO). Reactions were allowed to proceed for 20 min with mild agitation at RT, protected from light. Reactions were stopped by addition of Anl to 100 μ M followed by brief vortexing.

For detection, ~10 μ g of protein was separated on 12% Tris-Tricine SDS-PAGE gels. Following electrophoresis, gels were imaged by fluorescence scanning on a GE Typhoon Trio+ fluorescence scanner with detection for TAMRA. Subsequently, proteins were stained using the Coomassie Colloidal Blue staining kit according to the manufacturer's protocol. Images of Coomassie-stained gels were also obtained on the GE Typhoon Trio+ using red-laser excitation of the gel and omitting the emission filter.

Imaging. Cultures prepared as described earlier were pulse labeled with 100 μ M Anl for 20 min. To halt protein synthesis, cell pellets were washed with cold PBS containing 30 μ g mL⁻¹ chloramphenicol. Cells were fixed in 3.7% (w/v) formaldehyde at RT for 30 min, permeabilized in 0.1% (v/v) Triton-X 100 in PBS at RT for 5 min, sedimented by centrifugation, and resuspended in PBS. Reagents were added to the cell suspension to the following concentrations: 100 μ M CuSO₄, 500 μ M THPTA ligand, and 40 μ M alkyne-TAMRA. The reaction was initiated by addition of aminoguanidine and sodium ascorbate (from 20X stocks in water) to final concentrations of 5 mM each. The reaction was allowed to proceed for 30 min at RT, protected from light. Cells were washed twice with PBS to remove excess dye and resuspended in PBS. Each cell suspension was applied to a 5% agarose slab and covered with a coverslip. Images were obtained with a Zeiss LSM510 confocal microscope using a 63X oil immersion lens. Fluorescence intensities were determined using ImageJ software.

Western Blot Analysis. Protein contents in cell lysates were normalized by BCA assay, and 5 μ g of protein from each lysate was separated on 12% Tris-Tricine SDS-PAGE gels. Following electro-

phoresis, proteins were transferred to nitrocellulose membranes and subsequently blocked with 5% milk in PBST. Membranes were probed for NLL-MetRS by addition of Anti-PentaHis AlexaFluor647-conjugate to the blocking buffer at a dilution of 1:5,000. After 1 h of incubation with rocking at RT, membranes were washed for 5 min with PBST. The wash was repeated three times. Washed membranes were scanned on a GE Typhoon Trio+ fluorescence scanner with detection for AlexaFluor647.

■ ASSOCIATED CONTENT

■ Supporting Information

This material is available free of charge via the Internet at <http://pubs.acs.org>.

■ AUTHOR INFORMATION

Corresponding Author

*E-mail: tirrell@caltech.edu.

Notes

The authors declare no competing financial interest.

■ ACKNOWLEDGMENTS

This work was supported by National Institutes of Health grant NIH R01 GM062523 and by the Institute for Collaborative Biotechnologies through grant W911NF-09-0001 from the U.S. Army Research Office.

■ REFERENCES

- (1) Pomposiello, P. J., and Demple, B. (2001) Redox-operated genetic switches: the SoxR and OxyR transcription factors. *Trends Biotechnol.* 19, 109–111.
- (2) McGhie, E. J., Brawn, L. C., Hume, P. J., Humphreys, D., and Koronakis, V. (2009) Salmonella takes control: effector-driven manipulation of the host. *Curr. Opin. Microbiol.* 12, 117–124.
- (3) Dieterich, D. C., Link, A. J., Graumann, J., Tirrell, D. A., and Schuman, E. M. (2006) Selective identification of newly synthesized proteins in mammalian cells using bioorthogonal noncanonical amino acid tagging (BONCAT). *Proc. Natl. Acad. Sci. U.S.A.* 103, 9487–9487.
- (4) Szychowski, J., Mahdavi, A., Hodas, J. J., Bagert, J. D., Ngo, J. T., Landgraf, P., Dieterich, D. C., Schuman, E. M., and Tirrell, D. A. (2010) Cleavable biotin probes for labeling of biomolecules via azide-alkyne cycloaddition. *J. Am. Chem. Soc.* 132, 18351–18360.
- (5) Beatty, K. E., Xie, F., Wang, Q., and Tirrell, D. A. (2005) Selective dye-labeling of newly synthesized proteins in bacterial cells. *J. Am. Chem. Soc.* 127, 14150–14151.
- (6) Dieterich, D. C., Hodas, J. J., Gouzer, G., Shadrin, I. Y., Ngo, J. T., Triller, A., Tirrell, D. A., and Schuman, E. M. (2010) In situ visualization and dynamics of newly synthesized proteins in rat hippocampal neurons. *Nat. Neurosci.* 13, 897–905.
- (7) Ngo, J. T., Champion, J. A., Mahdavi, A., Tanrikulu, I. C., Beatty, K. E., Connor, R. E., Yoo, T. H., Dieterich, D. C., Schuman, E. M., and Tirrell, D. A. (2009) Cell-selective metabolic labeling of proteins. *Nat. Chem. Biol.* 5, 715–717.
- (8) Tanrikulu, I. C., Schmitt, E., Mechulam, Y., Goddard, W. A., 3rd, and Tirrell, D. A. (2009) Discovery of *Escherichia coli* methionyl-tRNA synthetase mutants for efficient labeling of proteins with azidonorleucine in vivo. *Proc. Natl. Acad. Sci. U.S.A.* 15285–15290.
- (9) Grammel, M., Zhang, M. M., and Hang, H. C. (2009) Orthogonal alkynyl amino acid reporter for selective labeling of bacterial proteomes during infection. *Angew. Chem., Int. Ed.* 49, 5970–5974.
- (10) Guzman, L. M., Belin, D., Carson, M. J., and Beckwith, J. (1995) Tight regulation, modulation, and high-level expression by vectors containing the arabinose PBAD promoter. *J. Bacteriol.* 177, 4121–4130.
- (11) Hong, V., Presolski, S. I., Ma, C., and Finn, M. G. (2009) Analysis and optimization of copper-catalyzed azide-alkyne cycloaddition for bioconjugation. *Angew. Chem., Int. Ed.* 48, 9879–9883.
- (12) Ding, H., Hidalgo, E., and Demple, B. (1996) The redox state of the [2Fe-2S] clusters in SoxR protein regulates its activity as a transcription factor. *J. Biol. Chem.* 271, 33173–33175.
- (13) Ding, H., and Demple, B. (2000) Direct nitric oxide signal transduction via nitrosylation of iron-sulfur centers in the SoxR transcription activator. *Proc. Natl. Acad. Sci. U.S.A.* 97, 5146–5150.
- (14) Nunoshiba, T., deRojas-Walker, T., Wishnok, J. S., Tannenbaum, S. R., and Demple, B. (1993) Activation by nitric oxide of an oxidative-stress response that defends *Escherichia coli* against activated macrophages. *Proc. Natl. Acad. Sci. U.S.A.* 90, 9993–9997.
- (15) Blanchard, J. L., Wholey, W., Conlon, E. M., and Pomposiello, P. J. (2007) Rapid changes in gene expression dynamics in response to superoxide reveal SoxRS-dependent and independent transcriptional networks. *PLoS One* 11, e1186.
- (16) Debets, M. F., van Berkel, S. S., Schoffelen, S., Rutjes, F. P., van Hest, J. C. M., and van Delft, F. L. (2010) Aza-dibenzocyclooctynes for fast and efficient enzyme PEGylation via copper-free (3 + 2) cycloaddition. *Chem. Commun.* 46, 97–99.
- (17) Abdeljabbar, D. M., Klein, T. J., Zhang, S., and Link, A. J. (2009) A single genomic copy of an engineered methionyl-tRNA synthetase enables robust incorporation of azidonorleucine into recombinant proteins in *E. coli*. *J. Am. Chem. Soc.* 131, 17078–17079.
- (18) Link, A. J., Vink, M. K., and Tirrell, D. A. (2007) Preparation of the functionalizable methionine surrogate azidohomoalanine via copper-catalyzed diazo transfer. *Nat. Protoc.* 2, 1879–1883.